

Al Salem Conversion Industries Enterprises LLC  
Al Salem Detergent & Disinfectants Mfg. LLC  
Al Salem Packaging Industries LLC  
Al Salem Food Industries LLC  
Al Salem Trading Ent. LLC



*Redefining the art of Hospitality*



# AL SALEM GROUP OF COMPANIES

A reputed name in the field of innovative food packaging solutions and service ware concepts, Al Salem belongs to 33+ year-old, fast growing, versatile range of rotatable & disposable packaging product manufacturing Group. It is a trusted partner for design, development, production and daily delivery of Eco-friendly foodservice and travel concepts across the globe to the aviation, travel, catering and hospitality industry.

The ultimate mission of Al Salem Group of companies is to pro-actively interact with customers for viable and environment friendly solutions to satisfy their identified and unidentified food packaging & service ware requirements. Through combining our detailed understanding of the industry, our passion for design and service trends and listening to the customer's specific needs, we are expert in creating tailor-made innovations.

With over 800 dedicated employees, 150+ state of the art automated machines producing a range of about 1000+ products and a worldwide supply chain, today, we are one of the leading supplier of Paper/ Film/ Foil/ Non-woven fabric & plastic/ compostable plastic-based disposable and rotatable products to 25+ major airlines. Further, we are steadily growing in the 'on-the-ground' food packaging market with leading food service brands.

At Al Salem, we're all about creating value added, exciting and inspiring user-friendly products set to enhance the overall customer experience that finds the right balance between sustainability, functionality, design and price. We therefore combine the most innovative production technologies and in-house product development capabilities with the latest consumer insights and design trends to satisfy even the most demanding and quality conscious customers.

We are an ISO 9001:2015, ISO 22000:2018, ISO 14001:2015 & FSSC 22000 Food Safety System certified and Sedex approved organization striving toward meeting the most stringent quality standards on the product, delivery, contingency, service, and corporate values. With our versatile experience in manufacturing products for the food service industry, we are experts in providing our customers with reliable products custom-made to meet their specifications.

At Al Salem, our concern towards the global environment is reflected through our thoughtful and responsible attitude towards developing safe & eco-friendly compostable, biodegradable, rotatable & recyclable products & sustainable solutions that would have minimum impact on the environment.



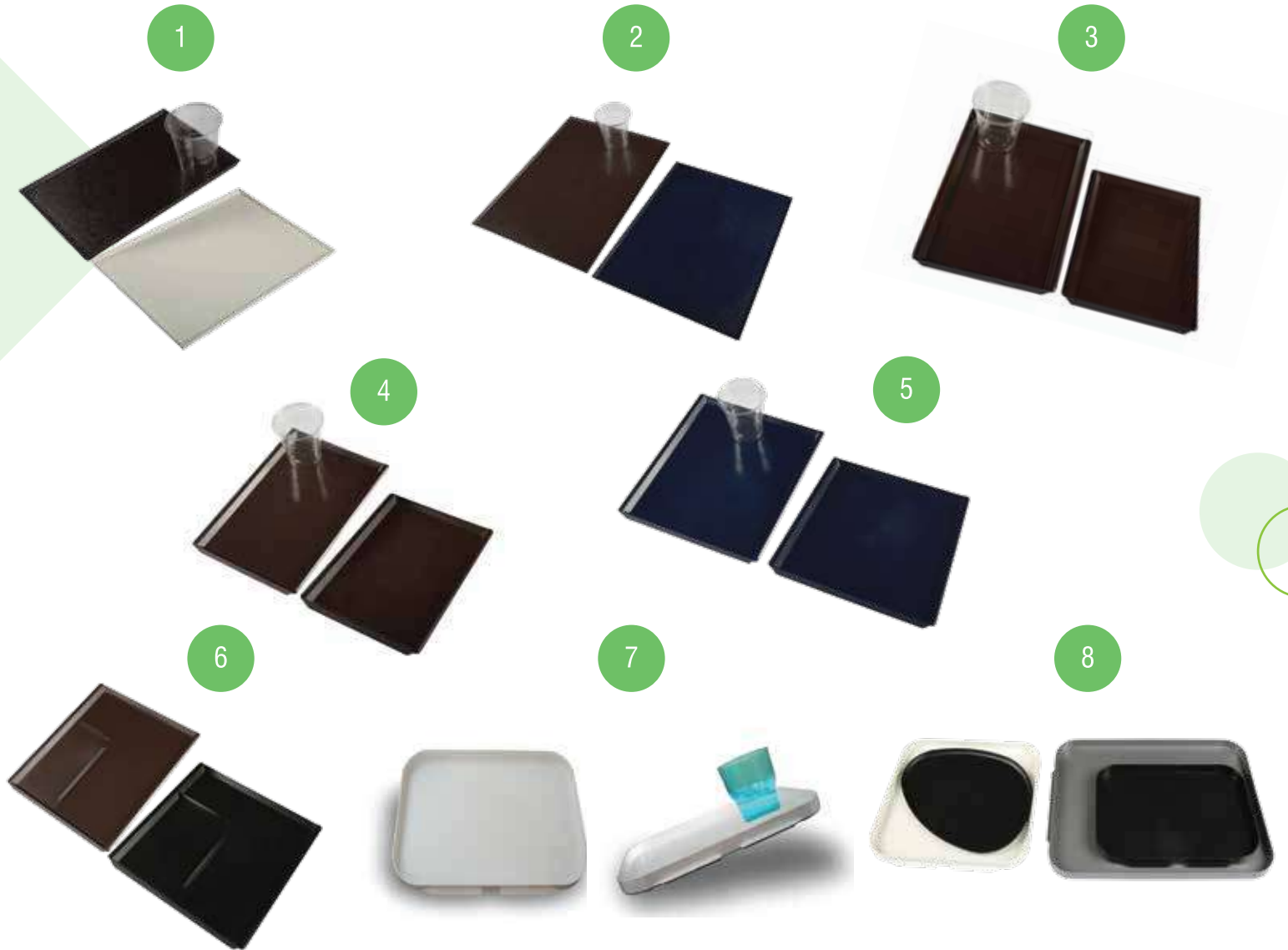
TRUSTED US & GROWING TOGETHER





# Al Salem Conversion Industries Enterprises LLC

## MEAL SERVICE CONCEPTS



|   |           |   |        |   |           |  |        |
|---|-----------|---|--------|---|-----------|--|--------|
| 1 | 4711NOBCT | 1/1 Business Class Normal/Non- Skid Tray  | 30 X 1 | 5 | 4723NOEYT | 2/3 Economy Class Normal/ Non- Skid Tray     | 60 X 1 |
| 2 | 4712NOBCT | 1/2 Business Class Normal/ Non- Skid Tray | 60 X 1 | 6 | 4723NOPAT | 2/3 Tray With Partition                      | 60 X 1 |
| 3 | 4711NOEYT | 1/1 Economy Class Normal/ Non- Skid Tray  | 30 X 1 | 7 | 47TRROCN  | 1/2 Tray Round Corner Normal/ Non- Skid Tray | 60 X 1 |
| 4 | 4712NOEYT | 1/2 Economy Class Normal/ Non- Skid Tray  | 60 X 1 | 8 | 47TRDIFF  | Trays In Customized Shapes                   | 60 X 1 |

**\*MANUFACTURER & EXPORTER OF CUSTOMIZED PRODUCTS**



# Al Salem Conversion Industries Enterprises LLC

## MEAL SERVICE CONCEPTS

1



2



3



4



5



6



7



8



|   |          |                               |          |   |           |                                  |         |
|---|----------|-------------------------------|----------|---|-----------|----------------------------------|---------|
| 1 | 26TRMT13 | Tray Mat 255 X 165 Mm         | 10 X 100 | 5 | 47PLATDI  | Disposable Dessert Bowl with Lid | 1 X 200 |
| 2 | 26TRMT23 | Tray Mat 255 X 230 Mm         | 10 X 100 | 6 | 47TEACUP  | Disposable Tea Cup W/handle      | 1 X 250 |
| 3 | 26TRMT11 | Tray Mat 255 X 340 Mm         | 10 X 100 | 7 | 47TEAROTP | Rotable Tea Cup W/handle         | 1 X 250 |
| 4 | 47PLATEI | Rotable Dessert Bowl with Lid | 1 X 200  | 8 | 47RECTPL  | Rectangular Container            | 1 X 150 |

**\*MANUFACTURER & EXPORTER OF CUSTOMIZED PRODUCTS**



# Al Salem Conversion Industries Enterprises LLC

## HOT MEAL

1



2



3



4



5



6



7



8



|   |          |                                  |          |   |          |                              |          |
|---|----------|----------------------------------|----------|---|----------|------------------------------|----------|
| 1 | 11L5330W | Aluminium Casserole Lacquered(S) | 1 X 1000 | 5 | 11P7382  | Aluminium Container (M)      | 1 X 500  |
| 2 | 11L5340W | Aluminium Casserole Lacquered(L) | 1 X 1000 | 6 | 11P73121 | Aluminium Container (L)      | 1 X 300  |
| 3 | 11L5335W | Aluminium Casserole Lacquered    | 1 X 1000 | 7 | 11P73161 | Aluminium Container (XL)     | 1 X 250  |
| 4 | 11P7356  | Aluminium Container (S)          | 1 X 500  | 8 | 11AL8325 | Aluminium Container with Lid | 1 X 1000 |

**\*MANUFACTURER & EXPORTER OF CUSTOMIZED PRODUCTS**



# Al Salem Conversion Industries Enterprises LLC

## HOT MEAL

1



2



3



4



5



6



7



8



|   |          |                               |          |   |          |                              |          |
|---|----------|-------------------------------|----------|---|----------|------------------------------|----------|
| 1 | 11AL8342 | Aluminium Container with Lid  | 1 X 1000 | 5 | 11ALULID | Aluminium Lids               | 1 X 1000 |
| 2 | 11AL8368 | Aluminium Container with Lid  | 1 X 900  | 6 | 11ALWHCO | Aluminium white Container(S) | 1 X 1000 |
| 3 | 11AL8389 | Aluminium Container with Lid  | 1 X 1000 | 7 | 11AP5105 | Aluminium Cake Cups          | 1 X 1500 |
| 4 | 11AL7310 | Aluminium Container Rectangle | 1 X 1000 | 8 | 11AP5115 | Aluminium Cake Cups          | 1 X 1000 |

**\*MANUFACTURER & EXPORTER OF CUSTOMIZED PRODUCTS**



# Al Salem Conversion Industries Enterprises LLC

## HOT MEAL

1



2



3



4



5



6



7



8



|   |           |                               |          |   |          |                                     |          |
|---|-----------|-------------------------------|----------|---|----------|-------------------------------------|----------|
| 1 | 11ALCOHM  | Aluminium Half Moon Container | 1 X 3000 | 5 | 11ALLDRO | Aluminium Lid Round                 | 1 X 1000 |
| 2 | 11ALCOOV  | Aluminium Oval Container      | 1 X 3000 | 6 | 11ALLDRD | Aluminium Lid Round (Red)           | 1 X 1000 |
| 3 | 11ALP6310 | Aluminium Oval Conatiner      | 1 X 1000 | 7 | 11AL3015 | Aluminium Foil 30cm X 150_300 Meter | 1 X 6    |
| 4 | 11ALSACO  | Aluminium Sambhar Container   | 1 X 3000 | 8 | 11AL4515 | Aluminium Foil 45cm X 150_300 Meter | 1 X 6    |

**\*MANUFACTURER & EXPORTER OF CUSTOMIZED PRODUCTS**

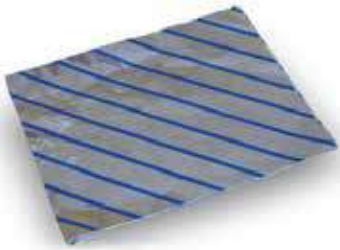




# Al Salem Conversion Industries Enterprises LLC

## HOT MEAL

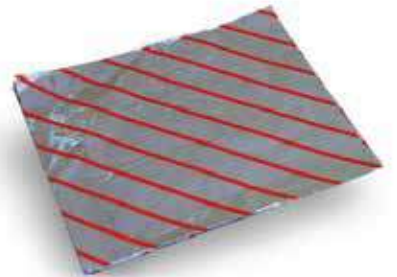
1



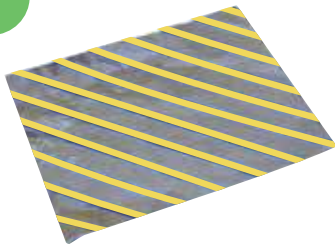
2



3



4



5



6



7



8



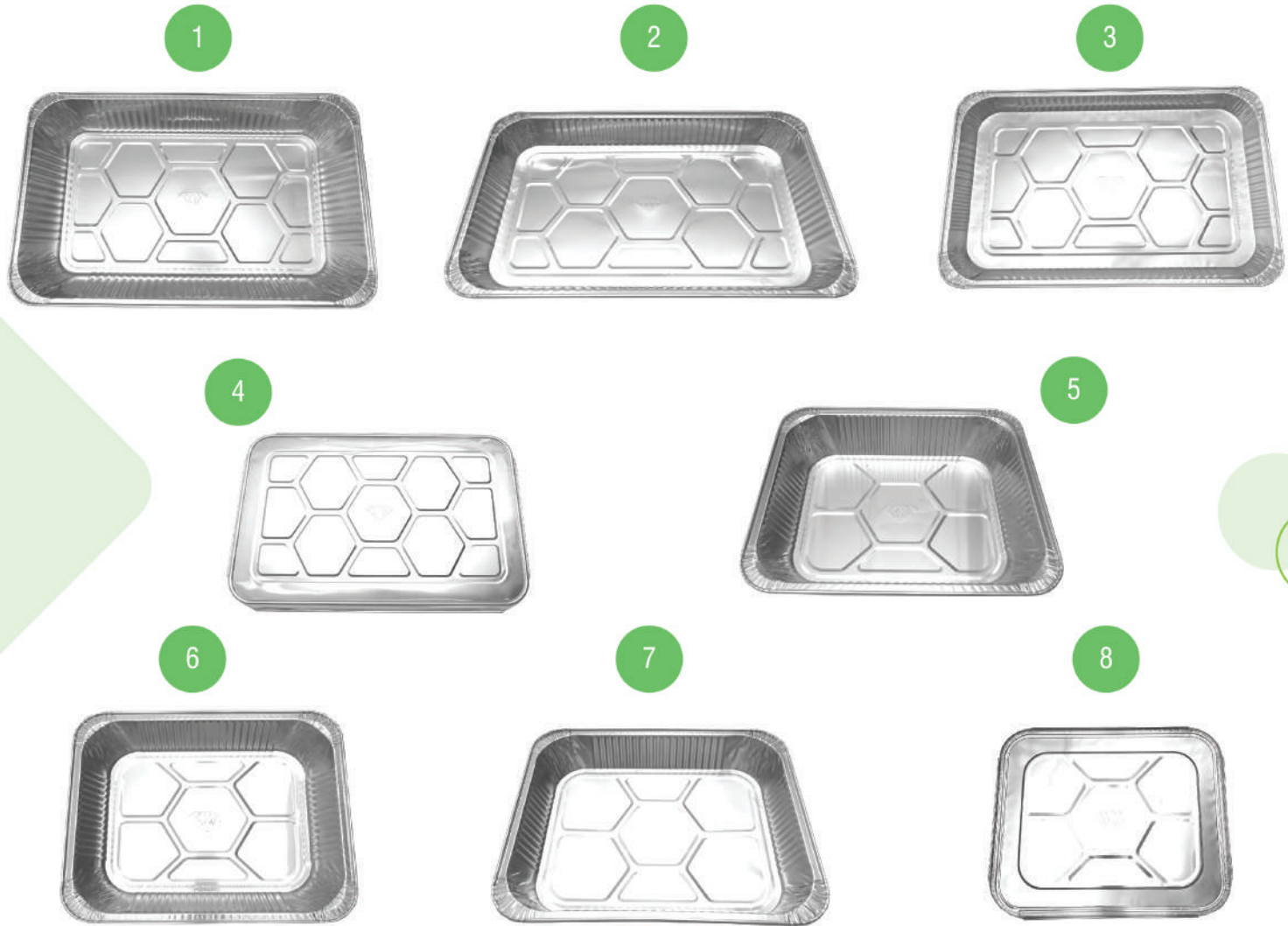
|   |          |                             |          |   |          |                                    |         |
|---|----------|-----------------------------|----------|---|----------|------------------------------------|---------|
| 1 | 11ALFOSB | Aluminium Foil Sheet Blue   | 1 X 2000 | 5 | 11ALFRDD | Aluminium Foil Roll 300MM          | 1 X 25  |
| 2 | 11ALFOSG | Aluminium Foil Sheet Green  | 1 X 2000 | 6 | 11ASPR72 | Aluminium Foil Supreme 450MM       | 1 X 25  |
| 3 | 11ALFOSR | Aluminium Foil Sheet Red    | 1 X 2000 | 7 | 11POP275 | Pop Up Foil Sheets 22.5cm X 27.5cm | 6 X 500 |
| 4 | 11ALFOSY | Aluminium Foil Sheet Yellow | 1 X 2000 | 8 | 11POP183 | Pop Up Foil Sheets 22.5 X 18.3 Cm  | 6 X 500 |

**\*MANUFACTURER & EXPORTER OF CUSTOMIZED PRODUCTS**



# Al Salem Conversion Industries Enterprises LLC

## HOT MEAL



|   |            |  |        |   |            |  |         |
|---|------------|--|--------|---|------------|--|---------|
| 1 | 0442FDCSTD | Aluminium Full Deep Standard Container | 1 x 50 | 5 | 0442HDCSTD | Aluminium Half Deep Standard Container | 1 x 100 |
| 2 | 0442ALFPME | Aluminium Full Pan Medium Container    | 1 x 50 | 6 | 0442ALHDMC | Aluminium Half Deep Medium Container   | 1 x 100 |
| 3 | 0442FDCHVY | Aluminium Full Deep Shallow Container  | 1 x 50 | 7 | 0442HDCHVY | Aluminium Half Deep Shallow Container  | 1 x 100 |
| 4 | 0442FDLKAV | Aluminium Lid for Full Deep Container  | 1 x 50 | 8 | 0442HDLKAV | Aluminium Lid for Half Deep Container  | 1 x 100 |

**\*MANUFACTURER & EXPORTER OF CUSTOMIZED PRODUCTS**





# Al Salem Conversion Industries Enterprises LLC

## HOT MEAL



|   |             |   |         |   |            |                              |         |
|---|-------------|---|---------|---|------------|------------------------------|---------|
| 1 | 0442EHDEEP  | Aluminium Extra Deep Container          | 2 x 50  | 5 | 0442AL1LBC | Aluminium 1LB Container      | 8 x 125 |
| 2 | 0442OVALRC  | Aluminium Roaster Oval Container        | 1 x 100 | 6 | 0442RCONT7 | Aluminium 7" Round Container | 4 x 125 |
| 3 | 0442ROASTC  | Aluminium Roaster Rectangular Container | 1 x 100 | 7 | 0442RCONT8 | Aluminium 8" Round Container | 4 x 125 |
| 4 | 0442AL650ML | Aluminium 650ml Container               | 8 x 125 | 8 | 0442RCONT9 | Aluminium 9" Round Container | 4 x 125 |

**\*MANUFACTURER & EXPORTER OF CUSTOMIZED PRODUCTS**





# Al Salem Conversion Industries Enterprises LLC

## HOT MEAL

1



2



3



4



5



6



7



8



|   |            |                                    |         |   |            |   |         |
|---|------------|------------------------------------|---------|---|------------|---|---------|
| 1 | 0442ALSQC9 | Aluminium 9" Square Container      | 2 x 100 | 5 | 0442POPBLU | Aluminium Popup Foil Sheet - Blue       | 8 x 250 |
| 2 | 0442ALPIE9 | Aluminium 9" Pie Pan Container     | 2 x 125 | 6 | 0442POPYEL | Aluminium Popup Foil Sheet - Yellow     | 8 x 250 |
| 3 | 0442POPGRE | Aluminium Popup Foil Sheet - Green | 8 x 250 | 7 | 0442POPPUR | Aluminium Popup Foil Sheet - Purple     | 8 x 250 |
| 4 | 0442POPRED | Aluminium Popup Foil Sheet - Red   | 8 x 250 | 8 | 0442POPCHI | Aluminium Popup Foil Sheet - Child meal | 8 x 250 |

**\*MANUFACTURER & EXPORTER OF CUSTOMIZED PRODUCTS**



# Al Salem Conversion Industries Enterprises LLC

## HOT MEAL

1



2



3



4



5



6



7



8



|   |            |                                  |          |   |            |                                |          |
|---|------------|----------------------------------|----------|---|------------|--------------------------------|----------|
| 1 | 0442EK5106 | Aluminium Container Round 5106   | 1 x 2000 | 5 | 0442A73142 | Aluminium Small Container      | 1 x 1000 |
| 2 | 0442A5115Q | Aluminium Container Round 5115 q | 1 x 1500 | 6 | 0442ALUSFC | Aluminium Snack Foil Container | 1 x 1000 |
| 3 | 0442EK5110 | Aluminium Container Round 5110   | 1 x 1500 | 7 | 0442AC5340 | Aluminium Container 5340       | 1 x 1000 |
| 4 | 0442AC515A | Aluminium Sambar Container       | 1 x 1000 | 8 | 0442AF5340 | Aluminium Lid for 5340         | 1 x 1000 |

**\*MANUFACTURER & EXPORTER OF CUSTOMIZED PRODUCTS**



# Al Salem Conversion Industries Enterprises LLC

## HOT MEAL

1



2



3



4



5



6



7



8



|   |           |  |          |   |           |  |         |
|---|-----------|--|----------|---|-----------|--|---------|
| 1 | 70CPT2050 | C-Pet Rectangular Tray White<br>137 X 94 X 35 Mm/ 260ml    | 1 X 1000 | 5 | 70CPT2103 | C-Pet Rectangular Tray Green<br>171 X 127 X 35 Mm / 470 ML | 1 X 650 |
| 2 | 70CPT2039 | C-Pet Rectangular Tray White<br>160 X 103 X 36 Mm / 350 MI | 1 X 750  | 6 | 70CPT2003 | C-Pet Rectangular Tray Black<br>173 X 129 X 25 Mm / 360 ML | 1 X 500 |
| 3 | 70CPT2063 | C-Pet Rectangular Tray Black<br>90 X 90 X 42mm / 180ml     | 1 X 2000 | 7 | 70CPT2002 | C-Pet Rectangular Tray White<br>173 X 129 X 50 Mm / 660 ML | 1 X 500 |
| 4 | 70CPT2060 | C-pet Rectangular Tray White<br>160 X 90 X 42 Mm / 300 MI  | 1 X 650  | 8 | 70CPT2001 | C-Pet Rectangular Tray White<br>173 X 129 X 35 Mm / 500 ML | 1 X 500 |

**\*MANUFACTURER & EXPORTER OF CUSTOMIZED PRODUCTS**





# Al Salem Conversion Industries Enterprises LLC

## HOT MEAL



|   |           |  |          |   |          |                                   |          |
|---|-----------|--|----------|---|----------|-----------------------------------|----------|
| 1 | 70CPT2262 | C-Pet Round Container White<br>108 X 108 X 40 Mm / 225ML       | 1 X 1000 | 5 | 70CPDEBO | C-Pet Dessert Bowl                | 1 X 2000 |
| 2 | 70CPT2057 | C-Pet Round Container White<br>88 X 88 X 50 Mm / 140ML         | 1 X 720  | 6 | 70ULTEMC | Rotable Casserole- Ultem          | 1 X 1000 |
| 3 | 70CPT2419 | C-Pet Rectangular Container Black<br>170 X 98 X 35 Mm / 350 ML | 1 X 1000 | 7 | 70CPETLR | Heat Sealable Roll For C Pet Dish | 1 X 1KG  |
| 4 | 70CPT2710 | C-Pet Round Container Black<br>101 X 101 X 38 Mm / 190 ML      | 1 X 640  | 8 | 70HSPCPT | Heat Sealable Lid For C Pet Dish  | 1 X 1KG  |

**\*MANUFACTURER & EXPORTER OF CUSTOMIZED PRODUCTS**



# Al Salem Conversion Industries Enterprises LLC

## CUTLERY

1



2



3



4



5



6



7



8



|   |          |                                  |         |   |          |                                |         |
|---|----------|----------------------------------|---------|---|----------|--------------------------------|---------|
| 1 | 96PRSP15 | Paper Spoon White/ Brown 15.6 Cm | 4 X 500 | 5 | 96PRTS15 | Paper Tea Spoon 9.5 Cm         | 4 X 500 |
| 2 | 96PRFR15 | Paper Fork White/ Brown 15.6 Cm  | 4 X 500 | 6 | 96BMSP16 | Wood/ Bamboo Spoon 14/ 16.5 Cm | 4 X 500 |
| 3 | 96PRKN15 | Paper Knife White/ Brown 15.6 Cm | 4 X 500 | 7 | 96BMFK16 | Wood/ Bamboo Fork 14/ 16.5 Cm  | 4 X 500 |
| 4 | 96PRSK16 | Paper Spork White/ Brown 15.6 Cm | 4 X 500 | 8 | 96BMKN16 | Wood/ Bamboo Knife 14/16.5 Cm  | 4 X 500 |

**\*MANUFACTURER & EXPORTER OF CUSTOMIZED PRODUCTS**



# Al Salem Conversion Industries Enterprises LLC

## CUTLERY

1



2



3



4



5



6



7



8



|   |           |                               |         |   |           |                           |         |
|---|-----------|-------------------------------|---------|---|-----------|---------------------------|---------|
| 1 | 96BMSK17  | Wood/ Bamboo Spork 14/16.5 Cm | 4 X 500 | 5 | 96COMKN16 | Compostable Knife 16.5 Cm | 4 X 500 |
| 2 | 96BMST14  | Wood/ Bamboo Stirrer 14 Cm    | 4 X 500 | 6 | 96COMSK17 | Compostable Spork 16.5 Cm | 4 X 500 |
| 3 | 96COMSP16 | Compostable Spoon 16.5 Cm     | 4 X 500 | 7 | 56TSAS20  | Plastic Tea Spoons        | 4 X 500 |
| 4 | 96COMFK16 | Compostable Fork 16.5 Cm      | 4 X 500 | 8 | 56SUPLDS  | Plastic Dinner Spoon      | 4 X 500 |

**\*MANUFACTURER & EXPORTER OF CUSTOMIZED PRODUCTS**





# Al Salem Conversion Industries Enterprises LLC

## CUTLERY

1



2



3



4



5



6



7



8



|   |          |                       |         |   |          |                           |         |
|---|----------|-----------------------|---------|---|----------|---------------------------|---------|
| 1 | 56SUPFO  | Plastic Fork          | 4 X 500 | 5 | 98SS18FK | Stainless Steel Fork      | 1 X 500 |
| 2 | 56PLSPKS | Plastic Spork         | 4 X 500 | 6 | 98SS18KN | Stainless Steel Knife     | 1 X 500 |
| 3 | 56SUPKN  | Plastic Knife         | 4 X 500 | 7 | 98SOSP17 | Stainless Soup Spoon      | 1 X 500 |
| 4 | 98SS17SP | Stainless Steel Spoon | 1 X 500 | 8 | 98TS13SP | Stainless Steel Tea Spoon | 1 X 500 |

**\*MANUFACTURER & EXPORTER OF CUSTOMIZED PRODUCTS**



# Al Salem Conversion Industries Enterprises LLC

## CUTLERY & CONDIMENT PACKS

1



2



3



4



5



6



7



8



|   |         |  |             |   |          |                                      |             |
|---|---------|--|-------------|---|----------|--------------------------------------|-------------|
| 1 | 51DCS2M | Disposable Cutlery Set (1 X 2)(Napkin/ Spoon)        | 1 X 2 X 500 | 5 | 56CHCUAS | Disposable Cutlery Set Black (1 X 6) | 1 X 6 X 500 |
| 2 | 51DCSP2 | Disposable Cutlery Set (1 X 2)(Napkin/fork)          | 1 X 2 X 500 | 6 | 51DCS3BL | Disposable Cutlery Set 1 X 3 Plastic | 1 X 3 X 500 |
| 3 | 51DCS3M | Disposable Cutlery Set (1 X 3)(Sugar/stirrer/napkin) | 1 X 3 X 500 | 7 | 51DCS7SL | Child Meal Cutlery 1 X 4             | 1 X 4 X 500 |
| 4 | 51DPS3M | Disposable Cutlery Set Black (1 X 4)                 | 1 X 4 X 500 | 8 | 51DCS7AS | Disposable Cutlery Set (1 X 7)       | 1 X 7 X 250 |

**\*MANUFACTURER & EXPORTER OF CUSTOMIZED PRODUCTS**



# Al Salem Conversion Industries Enterprises LLC

## PAPER CUPS & LIDS



|   |            |                              |          |    |            |                                    |          |
|---|------------|------------------------------|----------|----|------------|------------------------------------|----------|
| 1 | 24PCUP5OZ  | 5oz Ripple paper Cups W/Lid  | 1 X 1000 | 6  | 24PCUD3OZ  | 3oz Double wall Paper Cups W/Lids  | 1 X 1000 |
| 2 | 24PCUP7OZ  | 7oz Ripple paper Cups W/Lid  | 1 X 1000 | 7  | 24PCUD4OZ  | 4oz Double wall Paper Cups W/Lids  | 1 X 1000 |
| 3 | 24PCUP8OZ  | 8oz Ripple paper Cups W/Lid  | 1 X 1000 | 8  | 24PCUD7OZ  | 7oz Double wall Paper Cups W/Lids  | 1 X 1000 |
| 4 | 24PCUP12OZ | 12oz Ripple paper Cups W/Lid | 1 X 1000 | 9  | 24PCUD12OZ | 12oz Double wall Paper Cups W/Lids | 1 X 1000 |
| 5 | 24PCUP16OZ | 16oz Ripple paper Cups W/Lid | 1 X 1000 | 10 | 24PCUD16OZ | 16oz Double wall Paper Cups W/Lids | 1 X 1000 |

Above Products Available in PE/PLA Coating

**\*MANUFACTURER & EXPORTER OF CUSTOMIZED PRODUCTS**





# Al Salem Conversion Industries Enterprises LLC

## PAPER CUPS & LIDS



|   |           |                              |          |   |            |                                    |          |
|---|-----------|------------------------------|----------|---|------------|------------------------------------|----------|
| 1 | 24PCUN4OZ | 4oz Normal Paper Cups W/Lids | 1 X 1000 | 5 | 24PCUN10OZ | 10oz Double wall Paper Cups W/Lids | 1 X 1000 |
| 2 | 24PCUN5OZ | 5oz Normal Paper Cups W/Lids | 1 X 1000 | 6 | 24PCUN12OZ | 12oz Double wall Paper Cups W/Lids | 1X 1000  |
| 3 | 24PCUN6OZ | 6oz Normal Paper Cups W/Lids | 1 X 1000 | 7 | 96IWCOP23  | Ind. Wrapped Compostable Straw     | 40 X 250 |
| 4 | 24PCUN8OZ | 8oz Normal Paper Cups W/Lids | 1 X 1000 | 8 | 96STRW6P   | Paper Straw Plain / Customized     | 40 X 250 |

Above Products Available in PE/PLA Coating

**\*MANUFACTURER & EXPORTER OF CUSTOMIZED PRODUCTS**



# Al Salem Conversion Industries Enterprises LLC

## COMPOSTABLE & BIODEGRADABLE PACKAGING BAGS

1



2



3



4



5



6



7



8



|   |          |                                    |          |   |          |                                     |         |
|---|----------|------------------------------------|----------|---|----------|-------------------------------------|---------|
| 1 | 96BDGBSM | Bio Degradable Garbage Bags Small  | 8 X 25   | 5 | 96HPGBDS | Compostable Headset Plastic Bag     | 5 X 100 |
| 2 | 96BDGBMM | Bio Degradable Garbage Bags Medium | 20 X 12  | 6 | 96TLBBDS | Compostable Transparent Laundry Bag | 5 X 100 |
| 3 | 96BDGBLG | Bio Degradable Garbage Bags Large  | 20 X 100 | 7 | 96FDBBDS | Compostable Food Bag                | 1 X 500 |
| 4 | 96BDGBXL | Bio Degradable Garbage Bags XL     | 5 X 100  | 8 | 96BCBDSB | Compostable Blanket Collection Bag  | 1 X 100 |

**\*MANUFACTURER & EXPORTER OF CUSTOMIZED PRODUCTS**



# Al Salem Conversion Industries Enterprises LLC

## HYGIENE TISSUES

1



2



3



4



5



6



7



8



|   |          |                                   |           |   |          |                                   |          |
|---|----------|-----------------------------------|-----------|---|----------|-----------------------------------|----------|
| 1 | 21TRLAMI | Dissolvable Toilet Roll           | 1 X 48    | 5 | 26HTDH24 | Dissolvable Hand Towel 24 X 21 Cm | 20 X 150 |
| 2 | 26TSCOVR | Dissolvable Toilet Seat Cover     | 24 X 1000 | 6 | 262ALD40 | Airlaid Napkin 40 X 40 Cm 1 Ply   | 20 X 50  |
| 3 | 262FT410 | Dissolvable Facial Tissue         | 40 X 150  | 7 | 262ALPOC | Pocket Airlaid Napkin             | 10 X 100 |
| 4 | 26HTDH22 | Dissolvable Hand Towel 22 X 21 Cm | 21 X 150  | 8 | 262CNP20 | Premium Airlaid Napkin            | 40 X 50  |

**\*MANUFACTURER & EXPORTER OF CUSTOMIZED PRODUCTS**





# Al Salem Conversion Industries Enterprises LLC

## HYGIENE TISSUES



|   |          |  |          |   |          |   |          |
|---|----------|--|----------|---|----------|---|----------|
| 1 | 262CPR20 | 20 Cm Premium Napkin 1 Ply White & Brown | 40 X 50  | 5 | 262CNP40 | 40 Cm Napkin 1/2 Ply White & Brown        | 40 X 50  |
| 2 | 262CNP23 | 23/24 Cm Napkin 1/2 Ply White & Brown    | 40 X 50  | 6 | 261VF1PL | V Fold Hand Towel 1/2 Plain White & Brown | 20 X 150 |
| 3 | 262CNP28 | 28 Cm Napkin 1/2 Ply White & Brown       | 40 X 100 | 7 | 261ZF1PL | Z Fold Hand Towel 1/2 Plain White & Brown | 20 X 150 |
| 4 | 262CNP33 | 33 Cm Napkin 1/2 Ply White & Brown       | 20 X 100 | 8 | 272TOS36 | Toilet Sheet Paper                        | 36 X 260 |

**\*MANUFACTURER & EXPORTER OF CUSTOMIZED PRODUCTS**



# Al Salem Conversion Industries Enterprises LLC

## HYGIENE TISSUES

1



2



3



4



5



6



7



8



|   |          |                                      |              |   |           |                         |              |
|---|----------|--------------------------------------|--------------|---|-----------|-------------------------|--------------|
| 1 | 26WDSPNL | "Dispenser Napkin (L) White & Brown" | 40 X 100     | 5 | 217AU1PLY | Auto Cut Roll 1 / 2 Ply | 1 X 6 ROLLS  |
| 2 | 272TOROL | Toilet Rolls                         | 10 X 10ROLLS | 6 | 217KIROL  | Kitchen Roll            | 12 X 2 ROLLS |
| 3 | 272TORJU | Toilet Roll Jumbo                    | 1 X 12 ROLLS | 7 | 26PACOAS  | Paper Coasters          | 10 X 500     |
| 4 | 27MAXROL | Maxi Roll                            | 1 X 6 ROLLS  | 8 | 26PEACOC  | Eco-friendly Coasters   | 10 X 500     |

**\*MANUFACTURER & EXPORTER OF CUSTOMIZED PRODUCTS**



# Al Salem Conversion Industries Enterprises LLC

## PLASTIC GLASSES, LIDS & CONTAINERS



|   |          |                               |          |   |          |                                   |         |
|---|----------|-------------------------------|----------|---|----------|-----------------------------------|---------|
| 1 | 42RPETCL | Rpet Lid/ Container           | 100 X 25 | 5 | 41PLLARG | Rpet Plastic Clear Lid Large      | 8 X 25  |
| 2 | 42RPET8C | Rpet Glass 8oz                | 40 X 25  | 6 | 41PLMEDI | Rpet Plastic Clear Lid Medium     | 10 X 25 |
| 3 | 41PL1DSH | Rpet Plastic Clear Lid 1 Dish | 40 X 50  | 7 | 41PLOCTA | Rpet Plastic Clear Lid Octagon    | 10 X 25 |
| 4 | 41PL3DSH | Rpet Plastic Clear Lid 3 Dish | 40 X 50  | 8 | 41PLOVLL | Rpet Plastic Clear Lid Oval Large | 6 X 25  |

**\*MANUFACTURER & EXPORTER OF CUSTOMIZED PRODUCTS**





# Al Salem Conversion Industries Enterprises LLC

## PLASTIC GLASSES, LIDS & CONTAINERS

1



2



3



4



5



6



7



8



|   |           |  |         |   |           |  |          |
|---|-----------|--|---------|---|-----------|--|----------|
| 1 | 41PLOVSM  | Rpet Plastic Clear Lid Oval Small      | 6 X 25  | 5 | 42PP8CGL  | PP Glass 8OZ                             | 25 X 40  |
| 2 | 41PLRELA  | Rpet Plastic Clear Lid Rectangle Large | 6 X 25  | 6 | 44RTACAL  | Raita Cup/ Lid                           | 1 X 1000 |
| 3 | 41PLSQDIS | Rpet Plastic Clear Square Dish         | 6 X 25  | 7 | 770DPCWL1 | 1 Oz Cup With Lid                        | 20 X 100 |
| 4 | 41PLTRNG  | Rpet Plastic Clear Lid Triangle        | 10 X 25 | 8 | 42PLTU08  | 8 Oz Plastic Tumbler (Injection Moulded) | 40 X 25  |

**\*MANUFACTURER & EXPORTER OF CUSTOMIZED PRODUCTS**



# Al Salem Conversion Industries Enterprises LLC

## DRY FOOD

1



2



3



4



5



6



7



8



|   |          |                              |                |   |          |                           |                |
|---|----------|------------------------------|----------------|---|----------|---------------------------|----------------|
| 1 | 0107DRCH | Drinking Chocolate           | 500 X 6 GRAMS  | 5 | 01PPRSTP | Pepper Portion            | 1 X 1000       |
| 2 | 01RCNDC  | Non Dairy Creamer Portions   | 1000 X 3 GRAMS | 6 | 02RDSUG  | White / Brown Stick Sugar | 1000 X 5 GRAMS |
| 3 | 01RDSUG  | White / Brown Sugar Portions | 1000 X 5 GRAMS | 7 | 06RCSUGB | Sugar Cubes White & Brown | 40 X 250 GRAMS |
| 4 | 01SALSTP | Salt Portion                 | 1 X 1000       | 8 | 01RDSLTB | Salt And Pepper Tub       | 1 X 250 PCS    |

**\*MANUFACTURER & EXPORTER OF CUSTOMIZED PRODUCTS**



# Al Salem Conversion Industries Enterprises LLC

## DRY FOOD

1



2



3



4



5



6



7



8



|   |          |   |                |   |          |   |                  |
|---|----------|---|----------------|---|----------|---|------------------|
| 1 | 01ETSPTS | Salt and Pepper Twin Sachets                | 1 X 1000       | 5 | 0107JPRC | Japanaese Rice Crackers                                   | 200 X 15 GRAMS   |
| 2 | 0107SVBI | Savoury Biscuits                            | 250 X 10 GRAMS | 6 | 0107MORF | Mouth Refersher   | 1000 X 3 GRAMS   |
| 3 | 0107SNPC | Savoury Snack/ Pretzels<br>Cheesy Baguettis | 250 X 10 GRAMS | 7 | 0107INSM | Indian Savoury Mix  | 750 X 10 GRAMS   |
| 4 | 0107TZPC | Pretzels/ Cheesy Baguettis                  | 250 X 10 GRAMS | 8 | 0107PTMC | Premix Tea (Masala Chai / Saffron /<br>Cardomom / Ginger) | 500 X 12.5 GRAMS |

**\*MANUFACTURER & EXPORTER OF CUSTOMIZED PRODUCTS**





# Al Salem Conversion Industries Enterprises LLC

## HYGIENE & COMFORT

1



2



3



4



5



6



7



8



|   |           |                              |           |   |          |                        |          |
|---|-----------|------------------------------|-----------|---|----------|------------------------|----------|
| 1 | 61RCDT8G  | Rolled Cotton Towels 8 Gram  | 1 X 8 PCS | 5 | 260AWTWF | Hot-cold Towel Scented | 20 X 50  |
| 2 | 61RCDT13G | Rolled Cotton Towels 13 Gram | 1 X 20    | 6 | 26SFWRT  | Wet Wipes Scented      | 1 X 1000 |
| 3 | 61RCDT18G | Rolled Cotton Towels 18 Gram | 1 X 8     | 7 | 26SFABWS | Antibacterial Wipes    | 1 X 1000 |
| 4 | 61RCDT22G | Rolled Cotton Towels 22 Gram | 1 X 8     | 8 | 26WETSFL | Compostable Wet Tissue | 1 X 1000 |

**\*MANUFACTURER & EXPORTER OF CUSTOMIZED PRODUCTS**



# Al Salem Conversion Industries Enterprises LLC

## HYGIENE & COMFORT

1



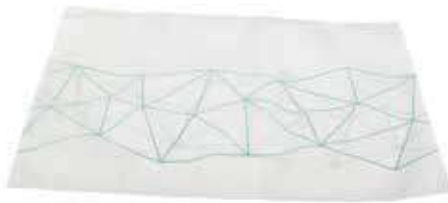
2



3



4



5



6



7



8



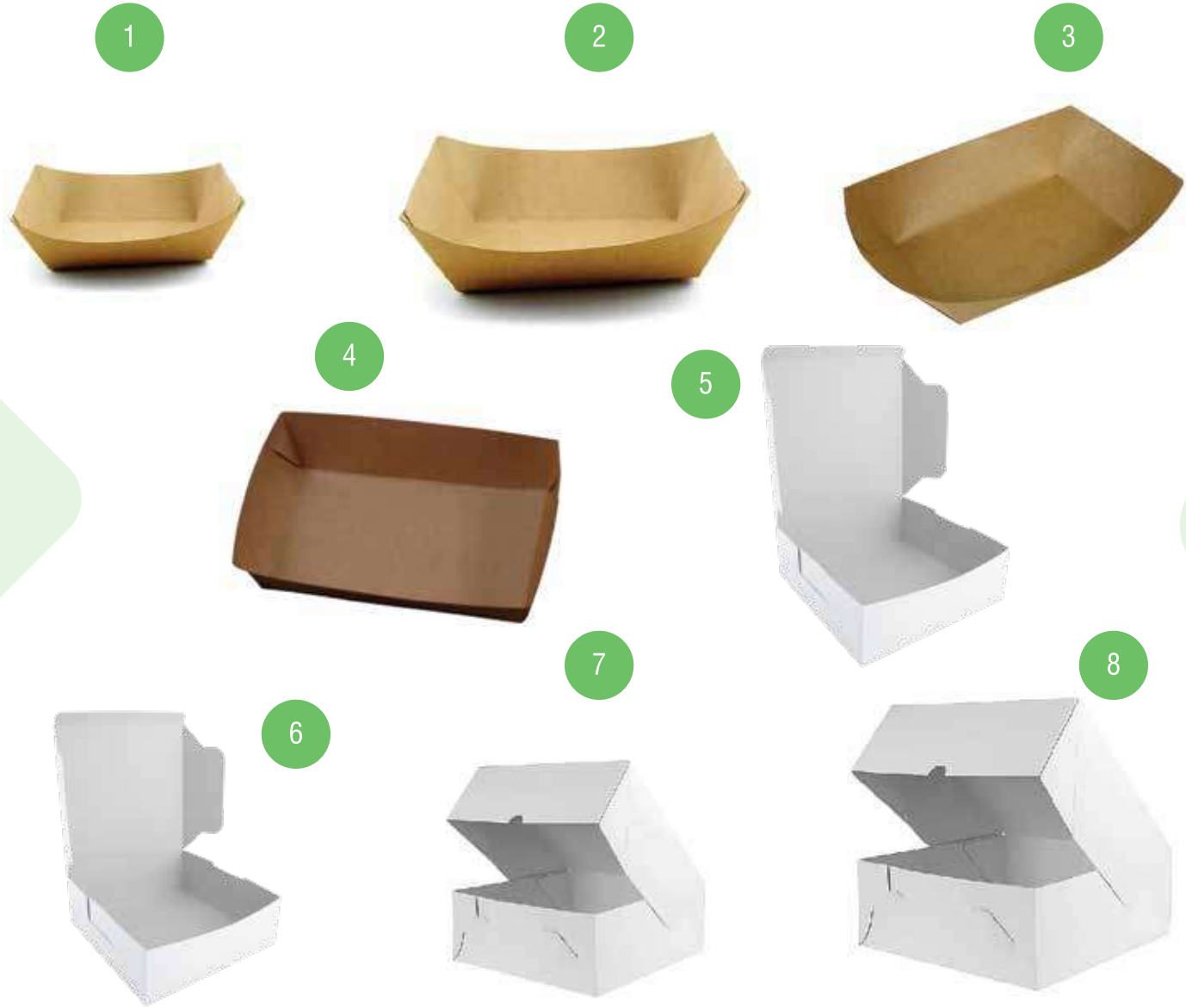
|   |           |                                   |          |   |          |              |         |
|---|-----------|-----------------------------------|----------|---|----------|--------------|---------|
| 1 | 61INWRCO  | Individually Wrapped Cotton Towel | 8 X 25   | 5 | 61PILLOW | Pillow       | 1 X 1   |
| 2 | 61WISC510 | 5s/10s Wipes Scented              | 20 X 12  | 6 | 61BLNBAG | Blanket Bag  | 5 X 100 |
| 3 | 61HRCRPPP | Head Rest Cover Rpet / Pla/PP     | 20 X 100 | 7 | 61NWSBHA | Shopping Bag | 1 X 500 |
| 4 | 61PIRPET  | Pillow Cover Rpet/Pla/PP          | 5 X 100  | 8 | 61LAUBAG | Laundry Bag  | 1 X 100 |

**\*MANUFACTURER & EXPORTER OF CUSTOMIZED PRODUCTS**



# Al Salem Conversion Industries Enterprises LLC

## PACKAGING SOLUTIONS



|   |          |                        |          |   |          |                          |         |
|---|----------|------------------------|----------|---|----------|--------------------------|---------|
| 1 | 363BTSM1 | Boat Tray 105x72x40 Mm | 1 X 1000 | 5 | 363CB259 | Cake Box 25 X 25 X 9 Cm  | 1 X 100 |
| 2 | 363BTMD1 | Boat Tray 140x85x55 Mm | 1 X 500  | 6 | 363CB25P | Cake Box 25 X 25 X 12 Cm | 1 X 100 |
| 3 | 363BTLG1 | Boat Tray 170x96x55 Mm | 1 X 500  | 7 | 363CB30C | Cake Box 30 X 30 X 12 Cm | 1 X 100 |
| 4 | 363BTXL1 | Boat Tray 190x70x50 Mm | 1 X 500  | 8 | 363CB35C | Cake Box 35 X 35 X 12 Cm | 1 X 100 |

**\*MANUFACTURER & EXPORTER OF CUSTOMIZED PRODUCTS**



# Al Salem Conversion Industries Enterprises LLC

## PACKAGING SOLUTIONS

1



2



3



4



5



6



7



8



|   |          |                                |          |   |          |                          |          |
|---|----------|--------------------------------|----------|---|----------|--------------------------|----------|
| 1 | 363PBBB1 | Paper Bag Brown                | 1 X 250  | 5 | 363YHSBA | Y Hot Snack Bag          | 1 X 3000 |
| 2 | 363PBBW1 | Paper Bag White                | 1 X 250  | 6 | 363YCSBA | Y Cold Snack Bag         | 1 X 3000 |
| 3 | 363SQBWH | Paper Bag without Handle White | 1 X 1000 | 7 | 363YESBA | Y Express Bag            | 1 X 3000 |
| 4 | 363SQBBH | Paper Bag without Handle Brown | 1 X 1000 | 8 | 363EFP16 | Eco Food Pail 16/26/32oz | 1 X 500  |

**\*MANUFACTURER & EXPORTER OF CUSTOMIZED PRODUCTS**





# Al Salem Conversion Industries Enterprises LLC

## PACKAGING SOLUTIONS



|   |          |   |         |    |          |   |         |
|---|----------|---|---------|----|----------|---|---------|
| 1 | 363PSBL1 | Paper Salad Bowl Round with Lid 250 ML  | 1 X 200 | 6  | 363PSBL6 | Paper Salad Bowl Round with Lid 1500 ML | 1 X 200 |
| 2 | 363PSBL2 | Paper Salad Bowl Round with Lid 500 ML  | 1 X 200 | 7  | 308KPSBL | Kraft Paper Soup Bowl 8oz with Lids     | 1 X 500 |
| 3 | 363PSBL3 | Paper Salad Bowl Round with Lid 750 ML  | 1 X 200 | 8  | 312KPSBL | Kraft Paper Soup Bowl 12oz with Lids    | 1 X 500 |
| 4 | 363PSBL4 | Paper Salad Bowl Round with Lid 1000 ML | 1 X 200 | 9  | 316KPSBL | Kraft Paper Soup Bowl 16oz with Lids    | 1 X 500 |
| 5 | 363PSBL5 | Paper Salad Bowl Round with Lid 1250 ML | 1 X 200 | 10 | 332KPSBL | Kraft Paper Soup Bowl 32oz with Lids    | 1 X 500 |

**\*MANUFACTURER & EXPORTER OF CUSTOMIZED PRODUCTS**



# Al Salem Conversion Industries Enterprises LLC

## PACKAGING SOLUTIONS

1



2



3



4



5



6



7



8



|   |          |                          |         |   |          |                                       |         |
|---|----------|--------------------------|---------|---|----------|---------------------------------------|---------|
| 1 | 363EPLBS | Eco Plain Lunch Box (S)  | 1 X 500 | 5 | 363PRBL1 | Paper Bowl Rectangle with Lid 650 ML  | 1 X 200 |
| 2 | 363EPLBM | Eco Plain Lunch Box (M)  | 1 X 500 | 6 | 363PRBL2 | Paper Bowl Rectangle with Lid 750 ML  | 1 X 200 |
| 3 | 363EPLBL | Eco Plain Lunch Box (L)  | 1 X 500 | 7 | 363PRBL3 | Paper Bowl Rectangle with Lid 1000 ML | 1 X 200 |
| 4 | 363EPLXL | Eco Plain Lunch Box (XL) | 1 X 500 | 8 | 363PRBL4 | Paper Bowl Rectangle with Lid 1250 ML | 1 X 200 |

**\*MANUFACTURER & EXPORTER OF CUSTOMIZED PRODUCTS**



# Al Salem Conversion Industries Enterprises LLC

## PACKAGING SOLUTIONS

1



2



3



4



5



6



7



8



|   |          |                              |          |   |          |                              |         |
|---|----------|------------------------------|----------|---|----------|------------------------------|---------|
| 1 | 363CSFMT | Compostable Stretch Film     | 1 X 6    | 5 | 28BPSH45 | Baking Paper Sheets 45x75cm  | 1 X 500 |
| 2 | 218BPR30 | Baking Paper Roll 30cm X 75m | 10 X 100 | 6 | 960GBBDS | Oven Bag                     | 1 X 250 |
| 3 | 218BPR45 | Baking Paper Roll 45cm X 75m | 10 X 100 | 7 | 96FWPAPR | Y Flow Wrap Part/ Full Print | 1 X 250 |
| 4 | 28BPSH40 | Baking Paper Sheets 40x60cm  | 1 X 500  | 8 | 9220CLFR | Compostable Cling Film       | 1 X 6   |

**\*MANUFACTURER & EXPORTER OF CUSTOMIZED PRODUCTS**



# Al Salem Conversion Industries Enterprises LLC

## PACKAGING SOLUTIONS

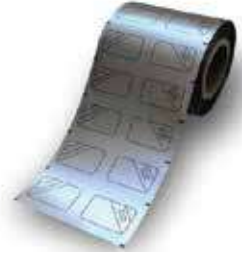
1



2



3



4



5



6



7



8



|   |          |  |          |   |           |  |          |
|---|----------|--|----------|---|-----------|--|----------|
| 1 | 9220PLBP | Plain Bopp Roll                                    | 1 X 1 KG | 5 | 9272PMPE  | Laminated Roll - 30mic Printed Bopp + 20mic Metalised Bopp | 1 X 1 KG |
| 2 | 924012CP | Printed Paper 40gsm + 12mic Pe                     | 1 X 1 KG | 6 | 928020CP  | Printed Roll - Coated Paper 80gsm + 20mic Pe               | 1 X 1 KG |
| 3 | 9250CLME | Laminated Roll - 30mic Clear Bopp + 20mic Met Bopp | 1 X 1 KG | 7 | 9290CMPE  | Aluminium Foil Printed Roll                                | 1 X 1 KG |
| 4 | 9250PRME | Laminated Roll - 12mic Pet + 20mic Metalised Cpp   | 1 X 1 KG | 8 | 92PAAL40P | Printed/ Plain Paper 40 Gsm+12mic Pe + 7mic Alu+12mic Pe   | 1 X 1KG  |

**\*MANUFACTURER & EXPORTER OF CUSTOMIZED PRODUCTS**





# Al Salem Conversion Industries Enterprises LLC

## PPE & HYGIENE PRODUCTS



|   |           |  |          |   |          |                     |          |
|---|-----------|--|----------|---|----------|---------------------|----------|
| 1 | 49PPEKITB | PPE Kit- Box Type                                | 1 X 240  | 5 | 61NWFAMA | Non Woven Face Mask | 25 X 40  |
| 2 | 49PPEKITP | PPE Kit- Pouch Type                              | 1 X 400  | 6 | 4990GLV  | 90 Cm Gloves        | 1 X 1000 |
| 3 | 49VGVL1L  | Vinyl Gloves Powder Free Clear/ Blue S-M-L-XL    | 10 X 100 | 7 | 49PGLV10 | Poly Gloves         | 20 X 100 |
| 4 | 49NGNL1L  | Nitrile Gloves Powder Free Clear / Blue S-M-L-XL | 10 X 100 | 8 | 61DAPN10 | Apron               | 1 X 1000 |

**\*MANUFACTURER & EXPORTER OF CUSTOMIZED PRODUCTS**



# Al Salem Conversion Industries Enterprises LLC

## PPE & HYGIENE PRODUCTS



|   |          |                        |          |   |           |                                 |          |
|---|----------|------------------------|----------|---|-----------|---------------------------------|----------|
| 1 | 61MCAP10 | Mob Cap                | 1 X 1000 | 5 | 272HDSZR  | Hand Sanitizer 25 /50 ML Bottle | 25 X 40  |
| 2 | 610VRSLV | Over Sleeves           | 1 X 1000 | 6 | 272HS25ML | Hand Sanitizer 20/25 ML Tube    | 1 X 1000 |
| 3 | 61VCOT05 | Visitor Coat           | 1 X 1000 | 7 | 272HS5LC  | Hand Sanitizer 5 Litre Can      | 20 X 100 |
| 4 | 272HS1ML | Hand Sanitizer Sachets | 1 X 1000 | 8 | 272CLIG1  | Disposable Coverall             | 1 X 25   |

**\*MANUFACTURER & EXPORTER OF CUSTOMIZED PRODUCTS**





## Manufacturing Expertise Since 1988



Meal Service Concepts



Hot Meal



Cutlery



Cutlery & Condiment Packs



Paper Cups & Lids



Compostable & Biodegradable Packaging Bags



Hygiene Tissues



Plastic Glasses, Lids & Containers



Dry Food



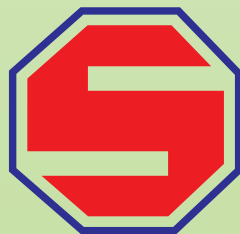
Hygiene & Comfort



Packaging Solutions



PPE & Hygiene Products



**Al Salem Conversion Industries Enterprises LLC**

P.O. Box 2367, Ajman, U.A.E +971 6 741 5860

[info@alsalemgrou.com](mailto:info@alsalemgrou.com) [www.alsalemgrou.com](http://www.alsalemgrou.com)